



GENESIS MgO t/a  
**GENESIS**  
 Nest Boxes  
 MANUFACTURED IN IRELAND

We manufacture  
 commercial and  
 bespoke nesting boxes  
 for:  
**Birds; Bats; Mammals  
 and Insects**



### Installation Guidelines for Genesis Barn Owl Nest Boxes.

**HEALTH AND SAFETY should at all times take precedent when fitting a GENESIS BARN OWL BOX. The boxes are heavy and are fitted in cumbersome places high off the ground. GENESIS NEST BOXES cannot accept any liability for hurt or damage whilst you are fitting one of our boxes. PLEASE WORK SAFELY and if you feel uncomfortable at any time stop what you are doing and contact a professional person to set the boxes up for you.**

ResCom Board is a fantastic product, it is ridged and strong, will last for 30 years in the Irish climate, is totally green and has many other advantages to boot, unfortunately it cannot be treated roughly and not suffer damage. Unsupported fasteners will pull through, lift it on the tray and bracket and it will break out - **please think** when you handle this wonderful material and **help it by supporting it before inserting a fastener - at all times.**

**THE NEST BOX NEEDS TO REST ON EITHER A BATTON BELOW IT (ON WALLS), HORIZONTAL BAR IN SHEDS OR A BRANCH IN A TREE, FASTING ONLY THOROUGH THE SIDE WITH AN UNSUPPORTED BOX WILL ALLOW THE BOX TO FALL FROM THE FITTING AREA.**

**ONCE INSTALLED WE RECOMMEND THAT YOU USE A RATCHET STRAP OR TWO AS AN ADDITIONAL FASTENER**

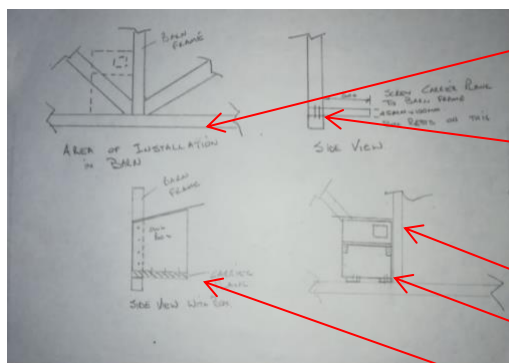
#### Your Genesis Barn Owl Box will come supplied with the following:

- Assembled barn owl box or flat pack with 30 bolts required for assembly included
- Roof supplied loose
- 28 washers to be placed on the board side
- 2 x Tec Screws for the roof

#### You need the following for fitting the box:

- Long woodscrews ( $\pm 10$ ) 75 x 4 mm
- Aluminium Angle for tree fitting
- White deal timber 98\*48\*500 mm minimum 2 pieces for Dutch barn fitting
- Tec Screws with washers for securing to angle iron or barn walls
- Drilling machine with 5 mm drill bits and Philips screw bit and Tec Screw tool
- Level
- Long rope can be used to hoist box up and into place

#### 1. Genesis Barn Owl Nest Boxes - Barn Installation:



Base bar

White Deal planks  
 screwed to base bar

Screw the box to the  
 planks on the bottom, to  
 the side support and the  
 rear support

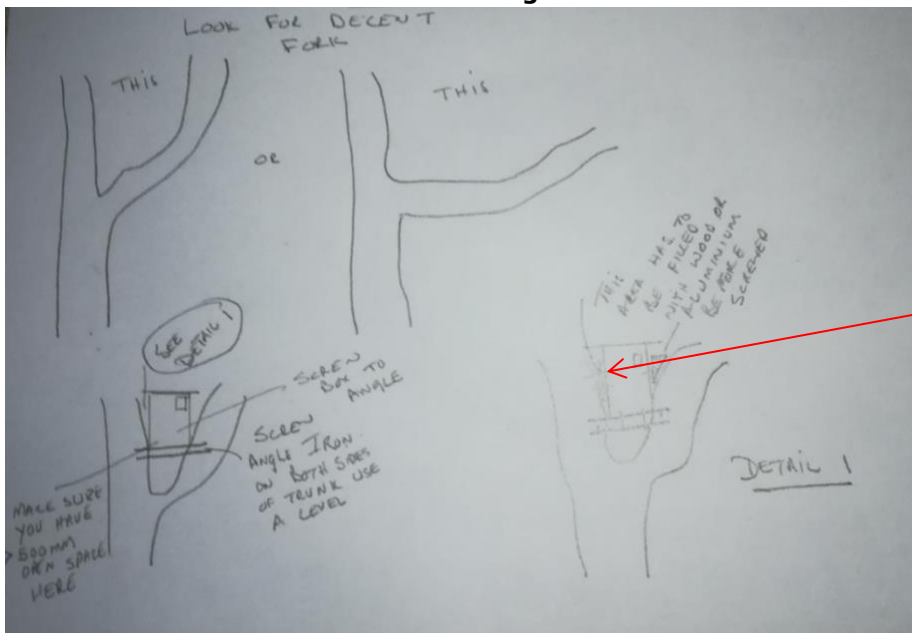


GENESIS MgO t/a  
**GENESIS**  
 Nest Boxes  
 MANUFACTURED IN IRELAND

**We manufacture commercial and bespoke nesting boxes for:**  
**Birds; Bats; Mammals and Insects**

- **When installing in a Dutch Barn please keep in mind the nearness of hay to the box that may allow cats access to the chicks.**
- Ensure that the owls have a clear flight path to the box, preferably more than one escape route, this will improve your chances of take-up
- Drawing 1 shows part of the end frame of a typical Dutch barn, this is the easiest place to install the box.
- Cut 2 x 100 x 45 x 500 mm white deal planks.
- Screw these to the base bar with 100 x 4 mm wood screws (not supplied) so that they extend away from the wall. The box is to stand on this. See drawing 2
- Now screw the box through the base, the side and the back to all the roof supports. Place a 4 x 35 mm stainless penny washer over each 4 x 50 mm wood screw you use. Drawings 3 & 4
- Adjust the lid to fit. Tip: place a heavy weight on the roof rather than screwing it down

### Genesis Barn Owl Nest Boxes Installing in a tree



Fill empty spaces with wood or aluminum for support before applying a screw through them

- When fitting a Genesis Barn Owl box in a tree ensure that the owls have a clear flight path to the box.
- Select a suitable fork. Make sure that you have more than 500 mm width and 600 mm height for the box to fit properly.
- Make sure that you get trunks that are as straight as possible, if need be support the box by placing insets where the trunk turns away. Screws applied through a vacuum will tear through the MgO sides. See detail 1.
-



GENESIS MgO t/a  
**GENESIS**  
 Nest Boxes  
 MANUFACTURED IN IRELAND

**We manufacture  
 commercial and  
 bespoke nesting boxes  
 for:  
 Birds; Bats; Mammals  
 and Insects**

- Once you have found a suitable place cut and predrill 2 pieces of 60 x 60 x 2 mm aluminium angle (not supplied) that will successfully cross the divide between the trunks see drawing 1.
- Using a spirit level attach a piece of angle on either side of the trunk to allow the Genesis Barn Owl Nest Box to rest on the angle.
- Now lift the box and put in its correct place
- Using 4 x 25 self-drilling Tech Screws (not supplied) drill through the aluminium angle (not supplied) base frame into the angle and tighten the screw. You can also screw through the base panel into the frame with Tech Screws.
- Make sure that any gap between the side of the box and the tree trunk on the sides is filled with wood or aluminium angle. Attach the side of the box to this by either 50 x 4 mm wood screws with a 4 x 35 mm stainless penny washer or 25 x 4 Tech screws into the aluminium.
- Tip: You can use nylon ratchet straps (not supplied) to further tie the box to the tree. Careful do not pull too tight! Remember to loosen these regularly to allow the trunk to grow.
- Once the Genesis Barn Owl Nest Box is secured to your satisfaction, fit the roof, this may require shaping or cutting the roof, a very sharp handsaw will do the job. Finish by drilling 2 x Tech Screws (supplied) into the roof brackets through the roof.
- Lastly; once the box is up **please take a photograph and share it with us** we sincerely welcome your orders and your contributions.